

Lead Sheet

Good morning church. Let's stand together, and remind our hearts of the truth that God so loved the world, that He gave His Son, that we might have eternal life.

KEY: G

You Gave Your Life Away

PAUL BALOCHE and KATHRYN SCOTT

mp ♩ = 68 *Gently*

INTRO

Synth only

Cym. swell

Add El. & Wurlitzer



VERSE 1



CHORUS 1, 2

1st X - Add Ac. & Bass

mf-f



© 2007 Integrity's Hosanna! Music (ASCAP)/Leadworship Songs/
Vertical Worship Songs (ASCAP) (all admin. by EMICMG Publishing.com).
All rights reserved. Used by permission.

You Gave Your Life Away - Lead Sheet - 2 of 3

KEY: G

19 has bro - ken ev 'ry chain; My sins are gone, my debt's been paid; You gave,

21 You gave Your life a - way for me, for *2nd time to Coda*

TURN 23 me. *EL. line* *Drum fill*

VERSE 2 *medium groove, Sn. 2 & 4*
27 2. You lived a sin - less life, yet You were cru - ci - fied;

29 You bought our free - dom on the cross.

31 For-sak - en for our sin, You died and rose a - gain;

33 Je - sus, You are the Lamb of God. *D.S. al Coda* You gave,

Sn. - building 8ths
Bass diamonds
CODA *mp* **BRIDGE**
35 me. How glo - rious is Your love. If I could

You Gave Your Life Away - Lead Sheet - 3 of 3

KEY: G

38 *mf* building...
sing for-ev - er, it's not e - nough. How glo - rious is

41 Your love. If I could sing for-ev - er, it's not e - nough.

44 *2-bar diamond light El. fills*
It's not e-nough. 'Cause You gave,

CHORUS 3, 4 *1st X - Bass & Drums out*
2nd X - Full groove (Add Harm.)
46 *mp-f* You gave Your life a-way; You gave, You gave Your life a-way; You gave,

48 *Em7* You gave Your life a-way for me. Your grace
1st X - Full Band, building...

50 *mf-f* has bro - ken ev - 'ry chain; My sins are gone, my debt's been paid; You gave,

52 *Em7* You gave Your life a-way for me. You gave, me. for
1 - REPEAT to CHORUS 4 building 8ths
2

ENDING
55 *G D# F# Am7 W.L. ad lib.*
me,

59 *G D# F# Am7 G D Am7 C2*
El. simile

Lead Sheet

Thank You, Lord. Thank You for the gift of Your life.
And we respond this morning with gratitude and praise.

KEY: G

Hosanna (Praise Is Rising)

BRENTON BROWN and PAUL BALOCHE

♩ = 114 *Driving Rock*

INTRO *mf* *Synth/Loop swell in*

G⁵

Cym. swell

VERSE 1, 2

mf

1st X - Add Ac.

2nd X - medium groove, Sn, 2 & 4

G⁵

3 1. Praise is the ris - ing, of eyes hearts are re - turn - ing to You;
2. Hear the sound of hearts are re - turn - ing to You;

1st X - El. & Bass diamond

2nd X - Add harm.

G⁵

1st X - tom fills

7 We turn to You.
We turn to You.

G⁵

11 Hope is stir - ring, hearts are yearn - ing for You;
In Your king - dom, bro ken lives are made new;

1st X - El. & Bass diamond

C²

G⁵

15 We long for You;
You make us new; 'Cause when we see

CHANNEL 1, 2

1st X - more motion, Kick 2 & 4

D

C

G⁵

19 You, we find strength to face the day. In Your pres -

D

C

G⁵

D

Both X - Add harm.

23 - ence all our fears are washed a - way, washed a - way. Ho -

© Copyright 2006 Thankyou Music (PRS)

(admin. worldwide by EMI CMG Publishing excluding Europe which is admin. by kingswaysongs.com)/

Integrity's Hosanna! Music (ASCAP) (c/o Integrity Media, Inc., 1000 Cody Road, Mobile, AL 36695).

All rights reserved. Used by permission.

Hosanna (Praise Is Rising) - Lead Sheet - 2 of 3

KEY: G

CHORUS 1, 2

Full groove
Sn. 2 & 4

27 *G*^{sus} *G* *Em*⁷ *C*²
san - na, ho - san na, You are the God

31 *G*⁵ *D*^{sus} *Em*⁷ *C*²
who saves us, wor-ty of all our prais - es.

36 *C*² *G*^{sus} *G* *Em*⁷
Ho - san na, ho - san na,

40 *C*² *G*⁵ *D*^{sus}
come have Your way a - mong us. We wel - come You here,

INSTR.

43 *Em*⁷ *C*² *G*^{sus} *G*
Lord Je - sus.

2-bar diamond
Ac. & loop cont.

47 *Em*⁷ *C*² *G*
'Cause when we see

CHANNEL 3

mf Drums out

52 *D* *C* *G*⁵
You, we find strength to face the day.

Add Drums
4 on the floor

55 *D* *C*
In Your pres - ence all our fears are washed a - way,

Hosanna (Praise Is Rising) - Lead Sheet - 3 of 3

KEY: G

58 **G⁵** washed a way. **D** 16th Sn. fill Ho -

CHORUS 3 **f Synth only** 16th Sn. fill Band in **Gsus** **G** **Em⁷** **C²** Opt. W.L. ad lib
61 san na, ho - san na, You are the God

65 **G⁵** **Dsus** **Em⁷** **C²**
who saves us, wor- thy of all our prais - es. Ho -

69 **Gsus** **G** **Em⁷** **C²**
san na, ho - san na, come have Your way

73 **G⁵** **Dsus** **Em⁷** **C²**
a - mong us. We wel- come You here, Lord Je - sus.

TAG **Gsus** **G** **Gsus** **G**
78 Ho -

82 **Gsus** **G** **Gsus**
san na, ho - san

85 **G** **Gsus** **G**
na, ho san na.

KEY: A

Lead Sheet

Christ the Lord

INTRO

♩ = 140 *Half time feel*

A (no3)

Full Band

(Kicks - 2nd X)

(Drum fill)

(Lead Gtr. cues)

End half time feel

B (no3)

D²F#m⁷**E**

D²

VERSE 1, 2

mf 1st X - Bass and Drums only
(w/ Lead fills)

A

1. Son of God proved His love that
2. By His grace, long a - go our

F#m⁷

while we were sin - ners Je - sus died for us.
sins we were as scar - let; now they're white as snow.

A

 D^2

No more shame, no more fear.
Love was nailed to the cross.
Our His

F#m⁷
$$\frac{F_m}{F}$$

Full Band

E

Sav - ior is a - live for - ev - er. God is near.
dy - ing and His ris - ing has changed our hearts.

Contains portions of "Christ The Lord Is Risen Today" by Charles Wesley. New words and music and this arr.
© 2011 Integrity Worship Music (ASCAP)/Leadworship Songs (ASCAP) (both admin. at www.EMICMGPublishing.com).
All rights reserved. Used by permission.

CHORUS 1, 2 *f*

Christ the Lord - Lead Sheet - 2 of 3

KEY: A



TURNAROUND 1, 2



BRIDGE

mf *Half time feel*
2nd X - beginning to build
F#m7 2nd X - Add harm.



1 - REPEAT to BRIDGE



Christ the Lord - Lead Sheet - 3 of 3

KEY: A

2 - to CHORUS
D2

63 grave, the sky.

CHORUS 3, 4 *f* 1st X - Diamonds

65 Christ the Lord is ris-en to - day! Esus (Drum fill) The

1st X - Resume time
F#m7 D2

69 Lamb of God has tak-en our sins a-way.

A E/B

73 Love's re - deem - ing work is done.

E/G# F#m7

76 Raise your voice! The King has o - ver - come.

D2 1 - REPEAT to CHORUS 4 2 - to ENDING

79 Hal - le - lu - jah! jah! Hal - le - lu -

ENDING A like the intro B (no3) D2

82 - jah!

Half time feel
F#m7 E D2

85 Oh, hal - le - lu - jah!

Lead Sheet

KEY: A

Above All

PAUL BALOCHE and LENNY LeBLANC

♩ = 64 *Worship Ballad**Drums - Cym. swells*

CHORUS 1

mf C# A Bm7 E G# A

Cru - ci - fied, and laid be - hind the stone; You

A Bm7 E G# A E G#

3 lived to die, re - ject - ed and a - lone; Like a rose,

F#m A E D A C#

5 tram - pled on the ground, You took the fall,

Bm7 A C# D F#m E A F#m D E

7 and You thought of me a - bove all. You were

CHORUS 2

A Bm7 E G# A A sus

10 Cru - ci - fied, and laid be - hind the stone; You

A Bm7 E G# A E G#

12 lived to die, re - ject - ed and a - lone; Like a rose,

F#m A E D A C#

14 tram - pled on the ground, You took the fall,

Above All - Lead Sheet - 2 of 2

KEY: A

16 **Bm7** **A** **C#** **D** **Esus** **E** **A** **E** **G#**

and You thought of me a-bove all. Like a rose,

TAG *mp Piano only* **F#m** **A** **E** **D** **A** **C#**

tram-pled on the ground, You took the fall,

21 **Bm7** **A** **C#** **D** **Esus** **E**

and You thought of me a-bove

ENDING *Add Synth/Strings* *W.L. ad lib to end* **A** **D2** **A** **A** **D2** **A**

all,

27 **A** **D2** **A** **A** **D2** **A** *rit.* **A**

Through the prophet Isaiah in chapter 53, He is despised and rejected by men, a Man of sorrows and acquainted with grief. And we hid, as it were, our faces from Him; He was despised, and we did not esteem Him. Surely He has borne our griefs and carried our sorrows; Yet we esteemed Him stricken, smitten by God and afflicted. But He was wounded for our transgressions, He was bruised for our iniquities; The chastisement of our peace was upon Him, and by His stripes we are healed. (Is. 53:3-5 NKJV)

KEY: G

Lead Sheet

Your Blood Ran Down

PAUL BALOCHE

♩ = 76 Sensitive Ballad

INTRO

mp Pno. only

6

molto rit. *a tempo*

G G² G G² Em⁷ C² C

G CM⁹ C⁶ G G G² G G² G G²

11 Pno. continue simile

Your blood ran

VERSE

2nd X-add String pad

14

G G² G G² Em⁷

down, Your blood ran down, Your blood ran

18 C² C CM⁷ C⁶ G G²

down, Your blood ran down. Your blood ran From Your

1- REPEAT to VERSE 2- to CHORUS

G G² G G² D F#

CHORUS 1

23

Em Cm Eb G D A C#

head, down Your face, from Your hands to Your feet,

27 G D D⁷ sus G G sus G D F#

Your blood ran down for me. From Your

Your Blood Ran Down - Lead Sheet - 2 of 2

KEY: G

CHORUS 2

31 *Em* *Cm* *G* *A* *G*
E_b *D* *C#* *D*

head, down Your face, from Your hands to Your feet, Your blood ran

36 *D⁷ sus* *GM⁷* *C²* *C* *G* *D⁷ sus*
B *D*

down, Your blood ran down, Your blood ran down for

ENDING

41 *G* *G²* *G* *G²* *Em⁷*

me.

45 *C²* *C* *molto rit.* *CM⁹* *C⁶* *G*

All Because of the Cross

PAUL BALOCHE and BEN GOWELL

♩ = 98 Moderately

INTRO

Synth (fade in) add 2 Gtrs. (Lead w/ heavy delay)

G Em mp C E G D Dsus

(Gtr. cues)

VERSE 1-3

Em C E G D Dsus

5 1. What can wash a way my sin? Noth - ing but the blood of Je - sus.
 2. For my par don this I see, Noth - ing but the blood of Je - sus.
 3. This is all my hope and peace, Noth - ing but the blood of Je - sus.

TURN 1

add Drums and Bass

Em C E G D Dsus

9 What can make me whole a - gain? Noth - ing but the blood of Je - sus.
 For my cleans - ing, this my plea, Noth - ing but the blood of
 This is all my right - eous - ness, Noth - ing but the blood of

1 - to VERSE 2

Dsus

TURN 1

Em C E G D Dsus

13 (Gtr. cues)

Je - sus.

2, 3 - to CHORUS

Dsus

CHORUS 1-3

Am f G C²

18 All be - cause of the cross, we are white as snow. All be -

Am G C²

22 cause of what You've done, there's a cleans - ing flow for all who come.

TURN 2

Em C E G D Dsus

26 Lord, we come.

2 - REPEAT to CHORUS

D.S. al Coda

All Because of the Cross - Lead Sheet - 2 of 2

KEY: G

INSTRUMENTAL

Ø CODA

Am⁷ sing 1st X only G C²



BRIDGE 1

Em Drums - Kick only, quarters

Dsus D



Em

Dsus D



BRIDGE 2

G

Gsus G

Gsus

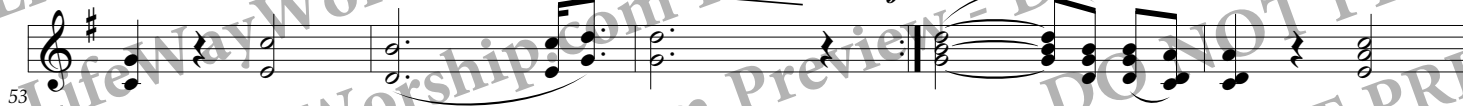


G add Harm. 2nd X

Gsus



Gsus



G



C²



G



C²



C²



Lead Sheet

KEY: B

The Same Love

PAUL BALOCHE and MICHAEL ROSSBACK

♩ = 102 Moderately

INTRO

mp Piano only

Add Strings



VERSE 1

Strings out

mp

1. You choose the hum - ble and raise them high; You choose the weak and make them strong.

add Strg. pad

G#m7

Dim

F#

E2

Cym. swell



You heal our bro - ken-ness in - side, and give us life.

CHORUS 1-3

*mf**f*

Full Band

1st X - 4 on the floor

2nd & 3rd X - Sn. on 2 & 4

B

F#

G#m7

E2



The same love that set the cap-tives free; the same love that o-pened eyes to see is call-

B

F#

G#m7

E2



ing us all by name. You are call - ing us all by name.

B

F#

G#m7

E2



The same God that spread the heav-ens wide; the same God that was cru - ci - fied is call-

B

F#

G#m7

E



- ing us all by name. You are call - ing us all by name.

1 - to VERSE 2

E

The Same Love - Lead Sheet - 2 of 2

KEY: B

Band out (4 on floor cont.)
Pno. cues & Strings

VERSE 2

Band in-lightly (4 on the fl.)
El. line

B mp

E²

B

29 2. You take the faith - less one a-side and speak the words,

E² building
G#m7 Sn. 2 & 4

D#m
F#

E²

Drums-8ths

33 "You are Mine." You call the cyn - ic and the proud, "Come to Me now."

2, 3 - to BRIDGE

INTERLUDE 1, 2

E² ff

F#

G#m7 E²

F#

G#m7 E²

38 Oh, oh, Oh, oh, Oh,

F# G#m7 E²

F#

G#m7 E²

F#

G#m7 E²

2nd time to Coda Ø

43 Oh, Oh, Oh,

BRIDGE 1

Band - diamonds
Piano & Kick cont.

B p-mp

F#(4)

G#m7

E

48 You're call - ing, You're call - ing; You're call - ing us to the cross.

BRIDGE 2

tom groove, build each time
El. line, Verse 2 vibe

B mf-f

F#(4)

G#m7

E

2nd X-Drums building 8ths

D.S. al Coda

52 You're call - ing, You're call - ing; You're call - ing us to the cross.

Ø CODA

TAG

mp Pno. (1/4s) only

B

F#(4)

G#m7

E

56 You're call - ing, You're call - ing; You're call - ing us to the cross.

p

B

F#(4)

G#m7

diamond

E²(no3)

60 You're call - ing, You're call - ing; You're call - ing us to the cross.

The Same Love

PAUL BALOCHE and MICHAEL ROSSBACK

INTRO

♩ = 102 *Moderately*
Piano only

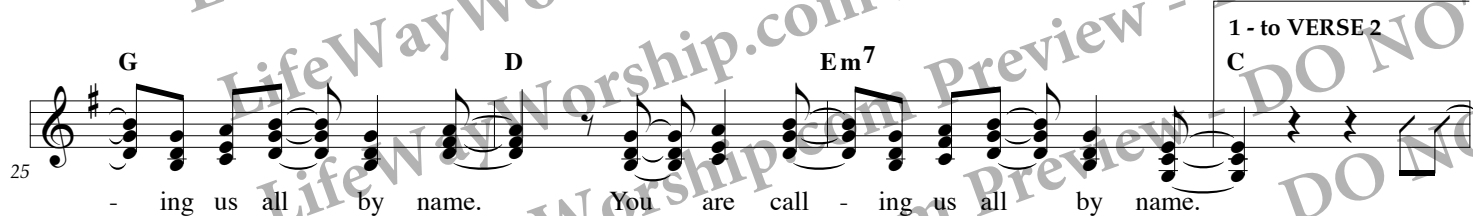
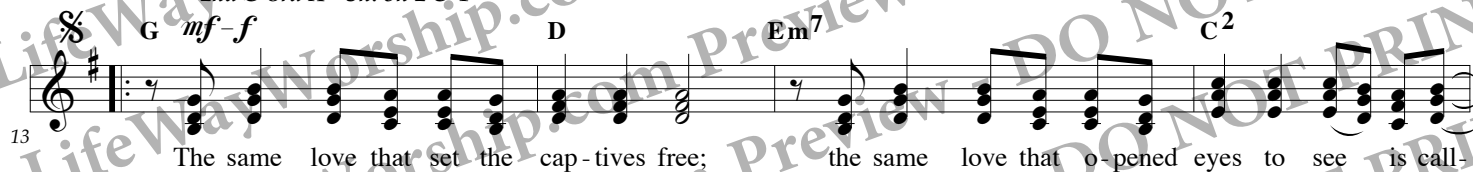
Capo 4



VERSE 1



CHORUS 1-3

Full Band
1st X - 4 on the floor
2nd & 3rd X - Sn. on 2 & 4

The Same Love - Lead Sheet - CAPO VERSION - 2 of 2

KEY: B

Band out (4 on floor cont.)
Pno. cues & Strings

VERSE 2

Band in-lightly (4 on the fl.)
El. line

29 *G mp C2*

2. You take the faith - less one a - side and speak the words,

33 *C2 Em7 building Sn. 2 & 4 Bm D C2 Drums-8ths*

"You are Mine." You call the cyn - ic and the proud, "Come to Me now."

38 *C2 ff INTERLUDE 1, 2 D Em7 C2 D Em7 C2*

Oh, oh, Oh, oh, Oh,

43 *D Em7 C2 D Em7 C2 2nd time to Coda*

oh, Oh, oh,

BRIDGE 1

Band - diamonds
Piano & Kick cont.

48 *G p-mp D(4) Em7 C*

You're call - ing, You're call - ing; You're call - ing us to the cross.

BRIDGE 2

tom groove, build each time
El. line, Verse 2 vibe

2nd X-Drums building 8ths

52 *G mf-f D(4) Em7 C D.S. al Coda*

You're call - ing, You're call - ing; You're call - ing us to the cross.

Ø CODA

TAG *mp Pno. (1/4s) only*

56 *G D(4) Em7 C*

You're call - ing, You're call - ing; You're call - ing us to the cross.

60 *p G D(4) Em7 C2(no3)*

You're call - ing, You're call - ing; You're call - ing us to the cross.